

Browntail Moth Detection Survey



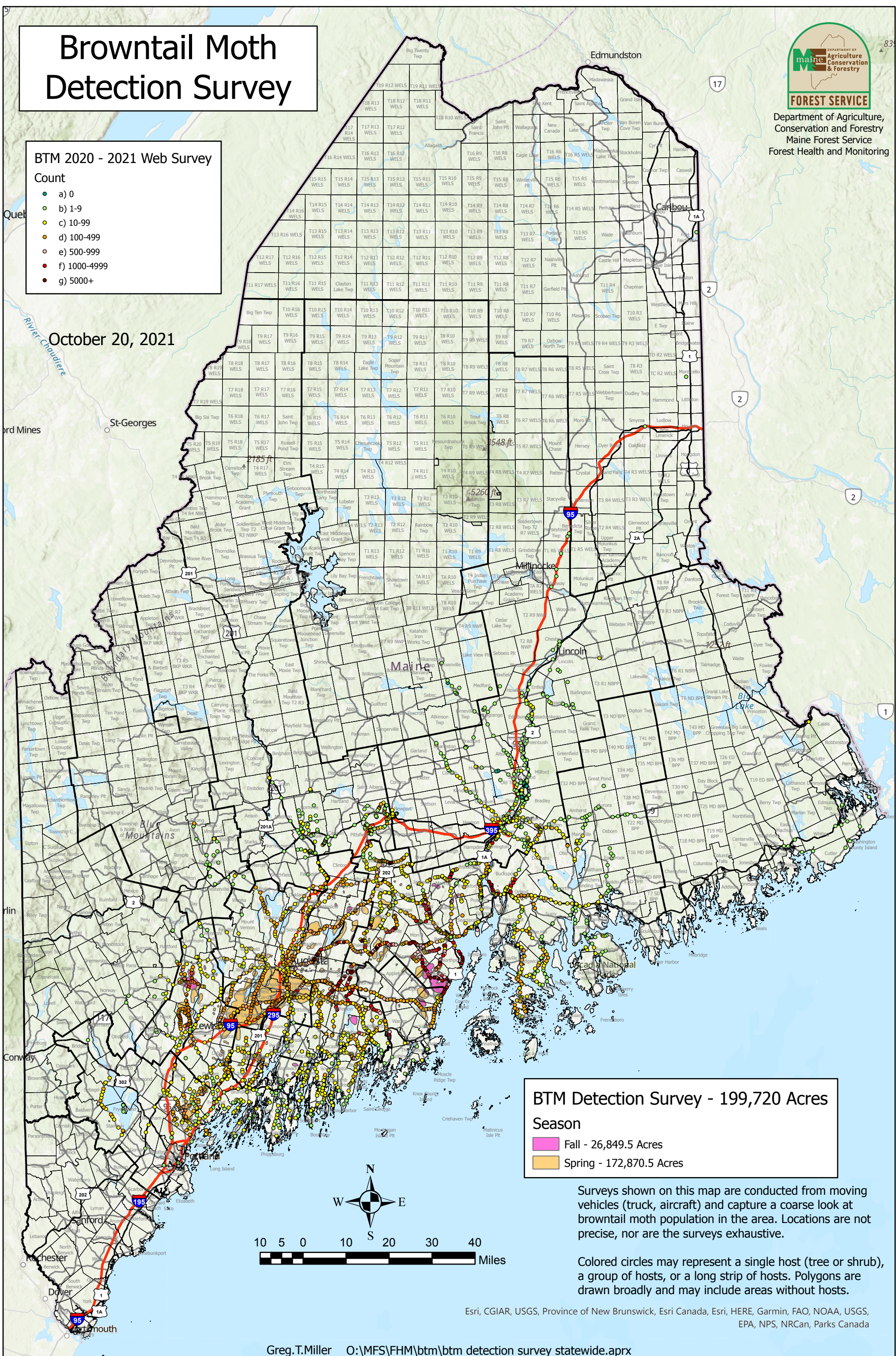
Department of Agriculture,
Conservation and Forestry
Maine Forest Service
Forest Health and Monitoring

BTM 2020 - 2021 Web Survey

Count

- a) 0
- b) 1-9
- c) 10-99
- d) 100-499
- e) 500-999
- f) 1000-4999
- g) 5000+

October 20, 2021



BTM Detection Survey - 199,720 Acres

Season

- Fall - 26,849.5 Acres
- Spring - 172,870.5 Acres

Surveys shown on this map are conducted from moving vehicles (truck, aircraft) and capture a coarse look at browntail moth population in the area. Locations are not precise, nor are the surveys exhaustive.

Colored circles may represent a single host (tree or shrub), a group of hosts, or a long strip of hosts. Polygons are drawn broadly and may include areas without hosts.

Esri, CGIAR, USGS, Province of New Brunswick, Esri Canada, Esri, HERE, Garmin, FAO, NOAA, USGS, EPA, NPS, NRCAN, Parks Canada