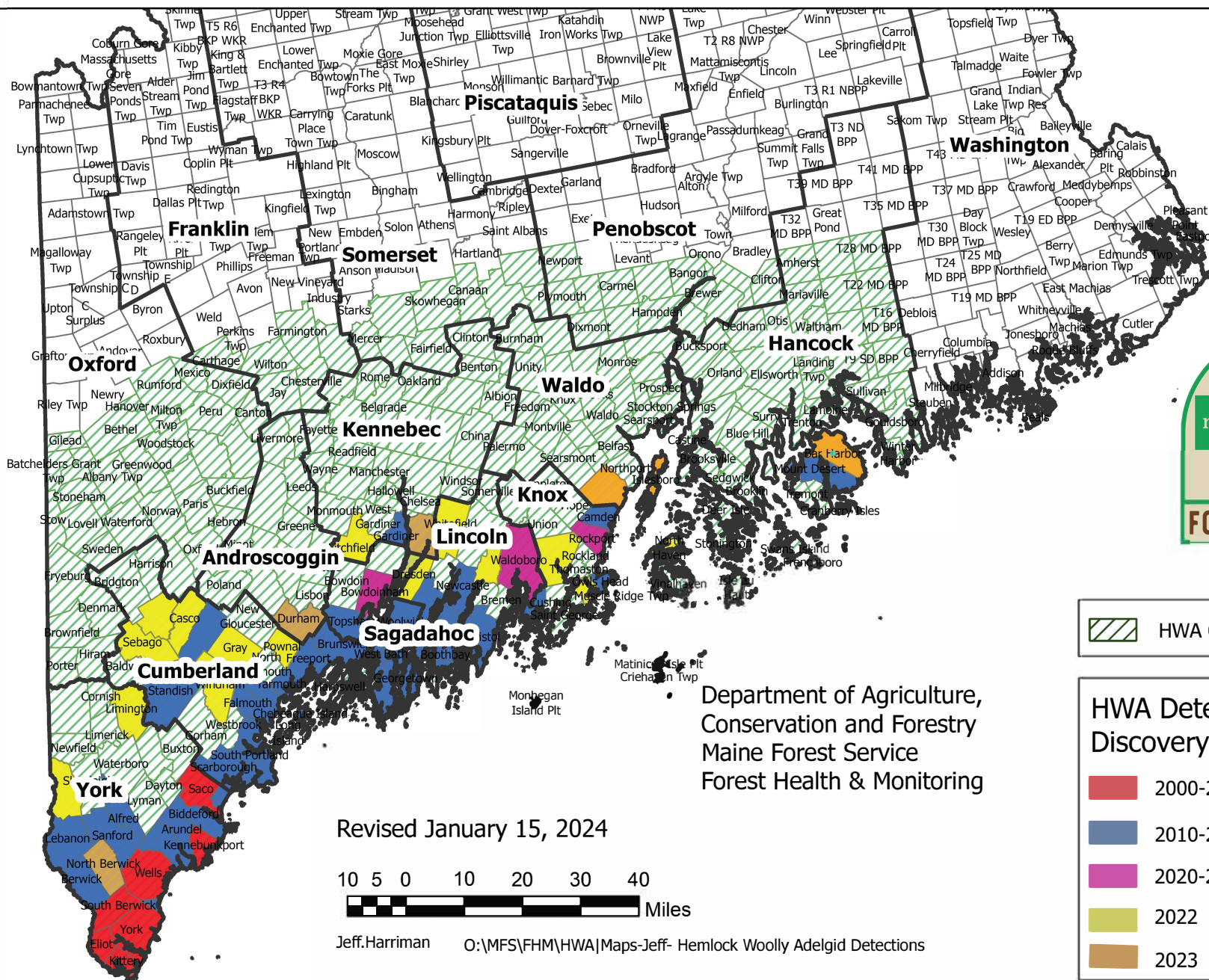







Hemlock Woolly Adelgid Detections In Maine's Forest Through 2023

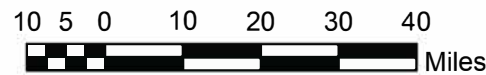


 HWA Quarantined Towns

HWA Detections by Discovery

-  2000-2009
-  2010-2019
-  2020-2021
-  2022
-  2023

Revised January 15, 2024



Jeff.Harriman O:\MFS\FHM\HWA\Maps-Jeff- Hemlock Woolly Adelgid Detections

Department of Agriculture,
Conservation and Forestry
Maine Forest Service
Forest Health & Monitoring