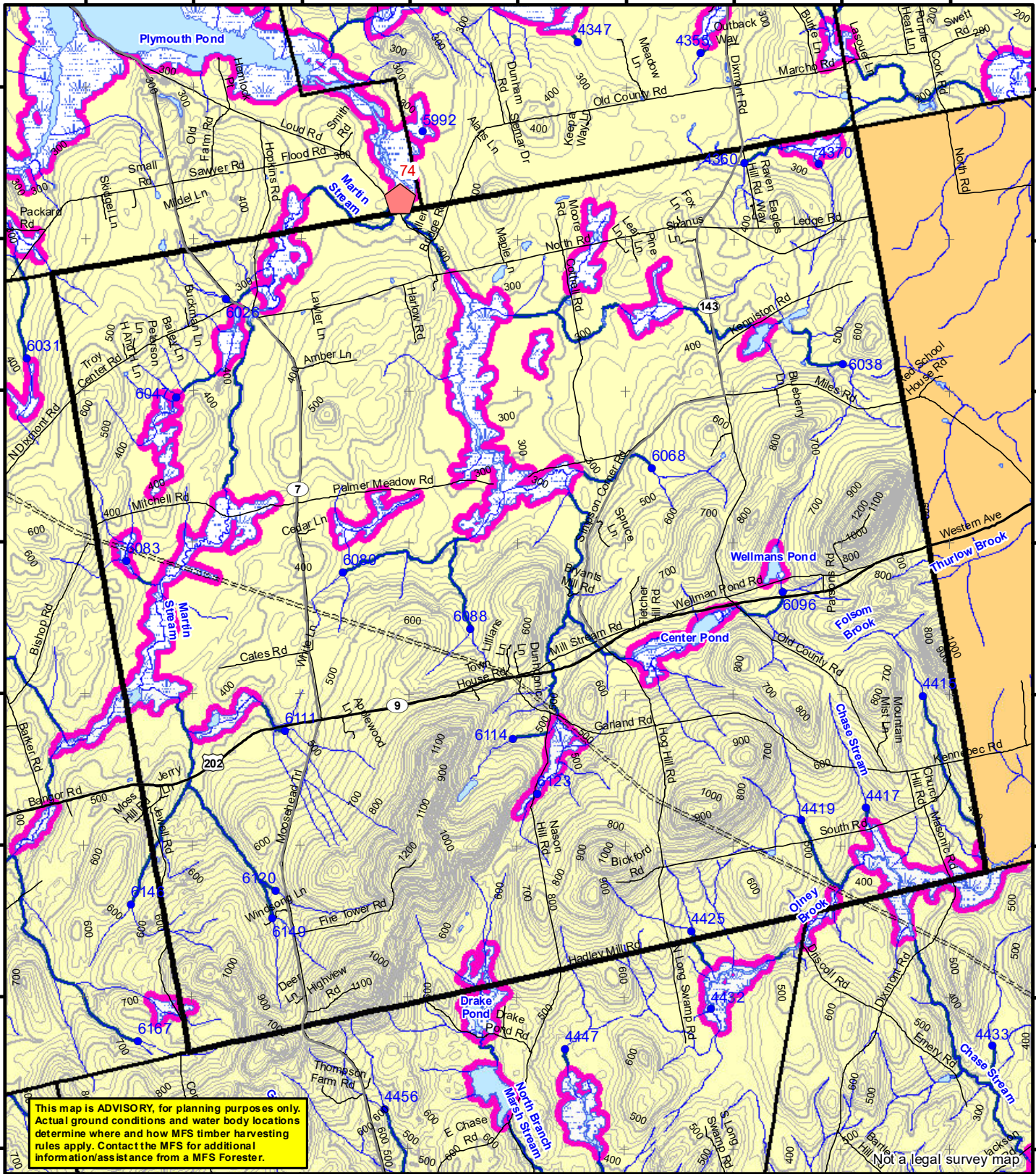


69°12'0"W 69°11'0"W 69°10'0"W 69°9'0"W 69°8'0"W 69°7'0"W 69°6'0"W 69°5'0"W 69°4'0"W

44°45'0"N  
44°44'0"N  
44°43'0"N  
44°42'0"N  
44°41'0"N  
44°40'0"N  
44°39'0"N  
44°38'0"N



**This map is ADVISORY, for planning purposes only. Actual ground conditions and water body locations determine where and how MFS timber harvesting rules apply. Contact the MFS for additional information/assistance from a MFS Forester.**

### Statewide Standards

**Buffers**

- 250 Foot Buffer Zones
- Great Ponds
- Non-forested Wetlands greater than 10 acres
- Rivers below the 25 square mile drainage point
- Coastal Wetlands
- Tidal Waters
- Essential Wildlife Habitat (Least Tern, Roseate Tern, Piping Plover)

**75 Foot Buffer Zones**

- Streams between the 300 acre drainage point and the 25 square mile drainage point

**Shoreline Integrity** - Streams draining less than 300 acres, ponds and Non-forested Wetlands greater than 0.1 acres and less than 10 acres

Shoreline Integrity also applies to UNMAPPED streams and wetlands.

**Habitat**

- Essential Wildlife Habitat (Least Tern, Roseate Tern, Piping Plover)

## Forest Operation Notification & Shoreland Area\* Map

# Dixmont

Adoption Date

### December 2021

\*See MFS Rule - Chapter 2.1 for additional information.

Department of Agriculture, Conservation and Forestry  
Maine Forest Service  
Forest Policy & Management

**Roads**

- Interstate
- US Highway
- State Highway
- 24k Roads

**Hydrology**

- Pond or Lake
- River
- Estuary

**Streams**

- Electric
- Pipeline
- Railroad
- Airfield

**Contours**

- 20 ft
- 100 ft

**Utilities**

- Electric
- Pipeline
- Railroad
- Airfield

**Data Source:**  
Maine Office of GIS

G.T.Miller E:\aws\SW S page size december 2021.mxd

**Drainage Points**

- 1234 300 Acre Drainage Point (start of the 75 ft buffer) 1234 - ID Number (location info)
- 56 25 Square Mile Drainage Point (start of the 250 ft buffer) 56 ID Number (location info)

**Wetlands**

- Emergent or Marine Wetland
- Non-forested Wetlands Greater Than 10 acres (Lacustrine, Palustrine)

LO Last Name \_\_\_\_\_  
LO First Name \_\_\_\_\_  
Prepared By \_\_\_\_\_  
FONS # \_\_\_\_\_  
Date \_\_\_\_\_

FON Town  
Statewide Standards Rules do not apply (Town/MDEP Standards apply)  
Statewide Standards Rules Apply  
LUPC - Unorganized or Deorganized Town  
Outside Maine