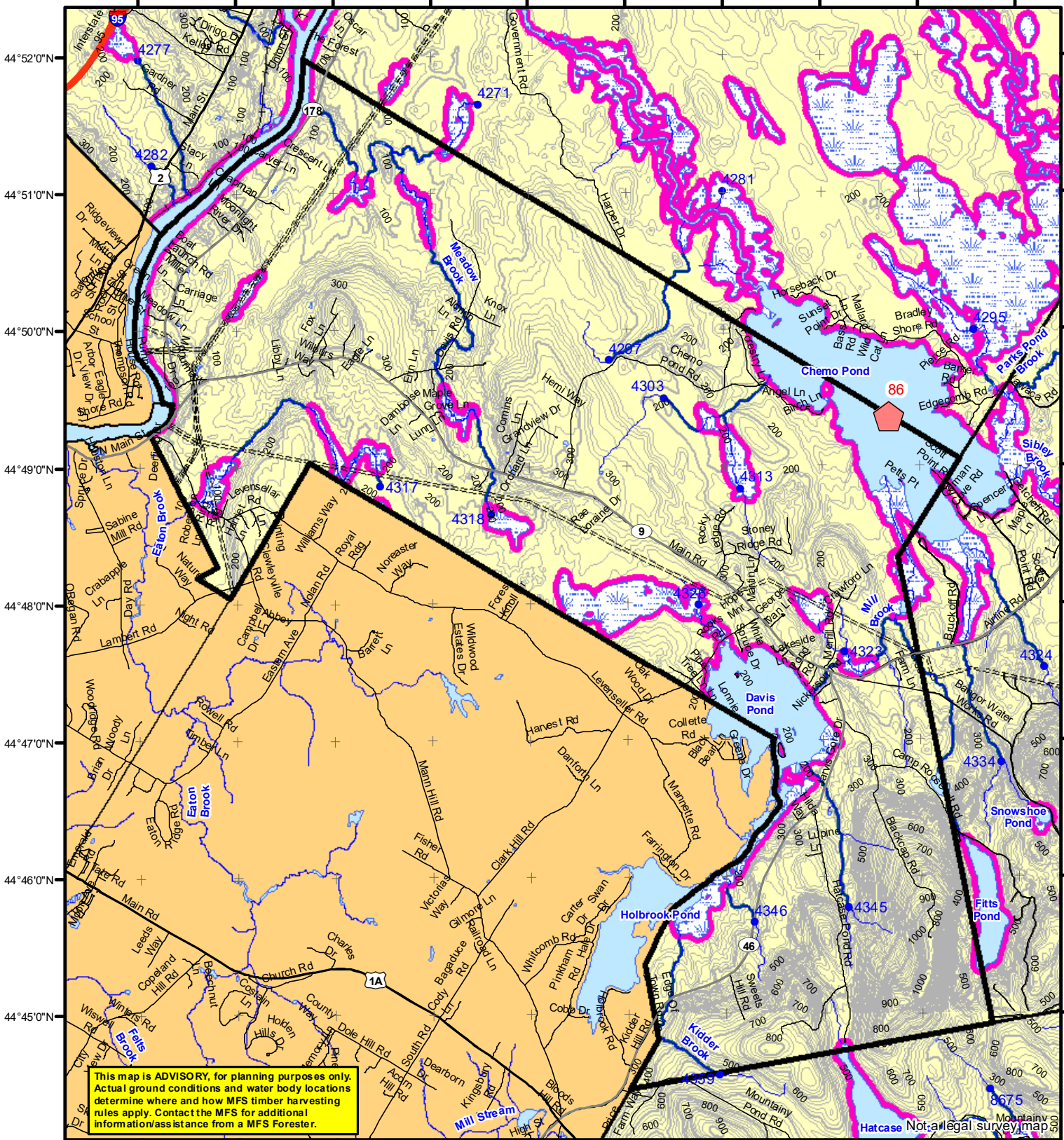


68°42'0"W 68°41'0"W 68°40'0"W 68°39'0"W 68°38'0"W 68°37'0"W 68°36'0"W 68°35'0"W 68°34'0"W 68°33'0"W



Statewide Standards

Forest Operation Notification & Shoreland Area* Map

Department of Agriculture, Conservation and Forestry
Maine Forest Service
Forest Policy & Management

LO Last Name _____
LO First Name _____
Prepared By _____
FONS # _____
Date _____

- Buffers**
- 250 Foot Buffer Zones
 - Great Ponds
 - Non-forested Wetlands greater than 10 acres
 - Rivers below the 25 square mile drainage point
 - Coastal Wetlands
 - Tidal Waters
 - Essential Wildlife Habitat (Least Tern, Roseate Tern, Piping Plover)
- 75 Foot Buffer Zones -**
- Streams between the 300 acre drainage point and the 25 square mile drainage point
- Shoreline Integrity -** Streams draining less than 300 acres, ponds and non-forested Wetlands greater than 0.1 acres and less than 10 acres
- Shoreline Integrity also applies to UNMAPPED streams and wetlands.
- Habitat**
- Essential Wildlife Habitat (Least Tern, Roseate Tern, Piping Plover)

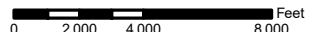
- Drainage Points**
- 1234 300 Acre Drainage Point (start of the 75 ft buffer) 1234 - ID Number (location info)
 - 56 25 Square Mile Drainage Point (start of the 250 ft buffer) 56 ID Number (location info)

- Wetlands**
- Emergent or Marine Wetland
 - Non-forested Wetlands Greater Than 10 acres (Lacustrine, Palustrine)

Eddington

Adoption Date
5/2/2008

December 2021



*See MFS Rule - Chapter 2.1 for additional information.

Roads

- Interstate
- US Highway
- State Highway
- 24k Roads

Contours

- 20 ft
- 100 ft

Utilities

- Electric
- Pipeline
- Railroad
- Airfield

Hydrology

- Pond or Lake
- River
- Estuary
- Streams

Data Source:
Maine Office of GIS

- FON Town
- Statewide Standards Rules do not apply (Town/MDEP Standards apply)
- Statewide Standards Rules Apply
- LUPC - Unorganized or Deorganized Town
- Outside Maine