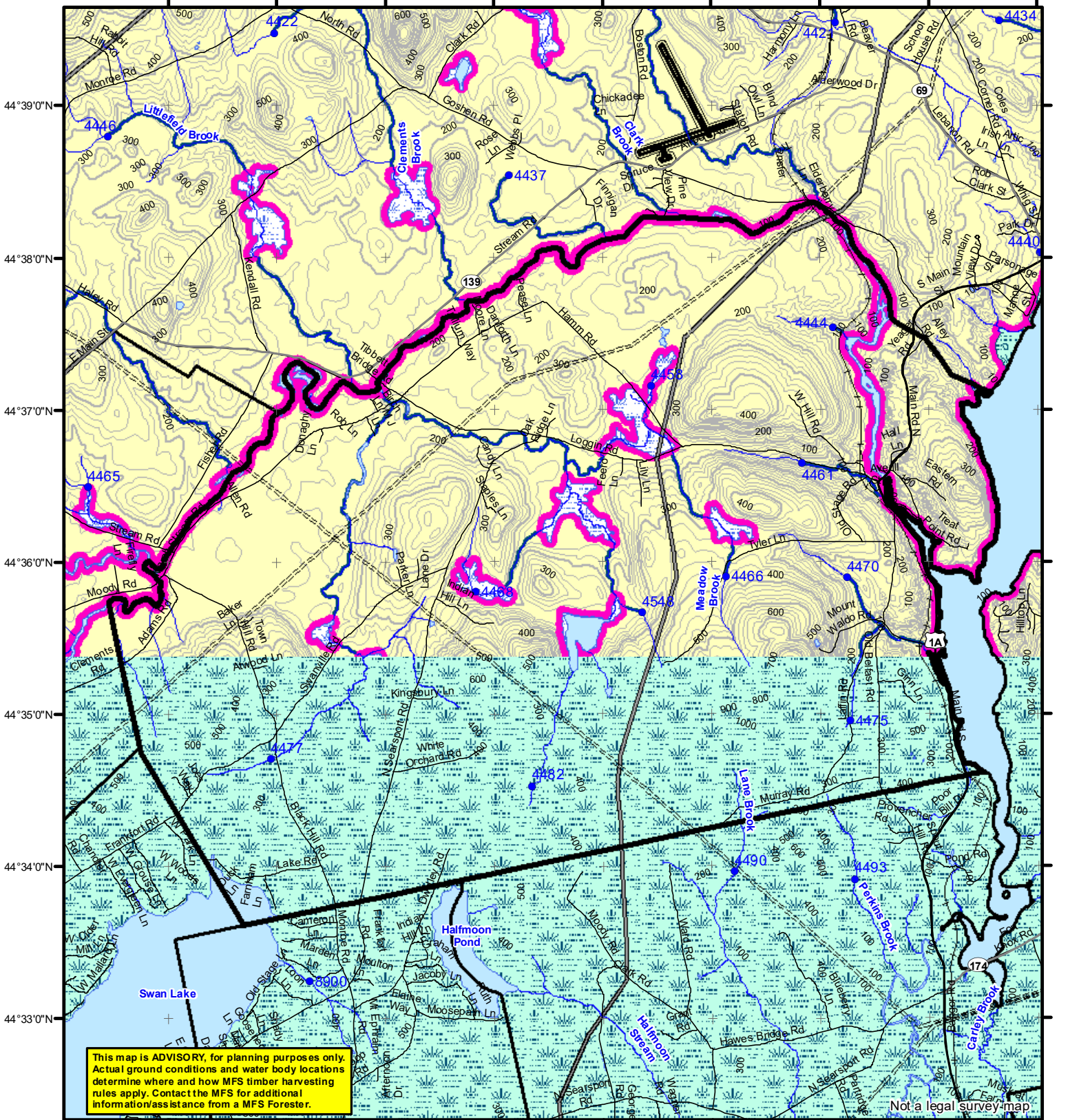


68°59'0"W 68°58'0"W 68°57'0"W 68°56'0"W 68°55'0"W 68°54'0"W 68°53'0"W 68°52'0"W 68°51'0"W



This map is **ADVISORY**, for planning purposes only. Actual ground conditions and water body locations determine where and how MFS timber harvesting rules apply. Contact the MFS for additional information/assistance from a MFS Forester.

Not a legal survey map



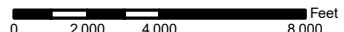
**Statewide Standards**

- Buffers**
  - 250 Foot Buffer Zones
    - Great Ponds
    - Non-forested Wetlands greater than 10 acres
    - Rivers below the 25 square mile drainage point
    - Coastal Wetlands
    - Tidal Waters
    - Essential Wildlife Habitat (Least Tern, Roseate Tern, Piping Plover)
  - 75 Foot Buffer Zones
    - Streams between the 300 acre drainage point and the 25 square mile drainage point
    - Shoreline Integrity - Streams draining less than 300 acres, ponds and Non-forested Wetlands greater than 0.1 acres and less than 10 acres
    - Shoreline Integrity also applies to UNMAPPED streams and wetlands.
- Habitat**
  - Essential Wildlife Habitat (Least Tern, Roseate Tern, Piping Plover)
- Drainage Points**
  - 1234 300 Acre Drainage Point (start of the 75 ft buffer) 1234 - ID Number (location info)
  - 56 25 Square Mile Drainage Point (start of the 250 ft buffer) 56 ID Number (location info)
- Wetlands**
  - Emergent or Marine Wetland
  - Non-forested Wetlands Greater Than 10 acres (Lacustrine, Palustrine)

**Forest Operation Notification & Shoreland Area\* Map**

**Frankfort**

Adoption Date  
6/1/2009  
  
December 2021



\*See MFS Rule - Chapter 2.1 for additional information.

Department of Agriculture, Conservation and Forestry  
Maine Forest Service  
Forest Policy & Management

- Roads**
  - Interstate
  - US Highway
  - State Highway
  - 24k Roads
- Hydrology**
  - Pond or Lake
  - River
  - Estuary
- Streams**
- Contours**
  - 20 ft
  - 100 ft
- Utilities**
  - Electric
  - Pipeline
  - Railroad
  - Airfield
- Data Source:**  
Maine Office of GIS

LO Last Name \_\_\_\_\_  
LO First Name \_\_\_\_\_  
Prepared By \_\_\_\_\_  
FONS # \_\_\_\_\_  
Date \_\_\_\_\_

- FON Town
- Statewide Standards Rules do not apply (Town/MDEP Standards apply)
- Statewide Standards Rules Apply
- LUPC - Unorganized or Deorganized Town
- Outside Maine