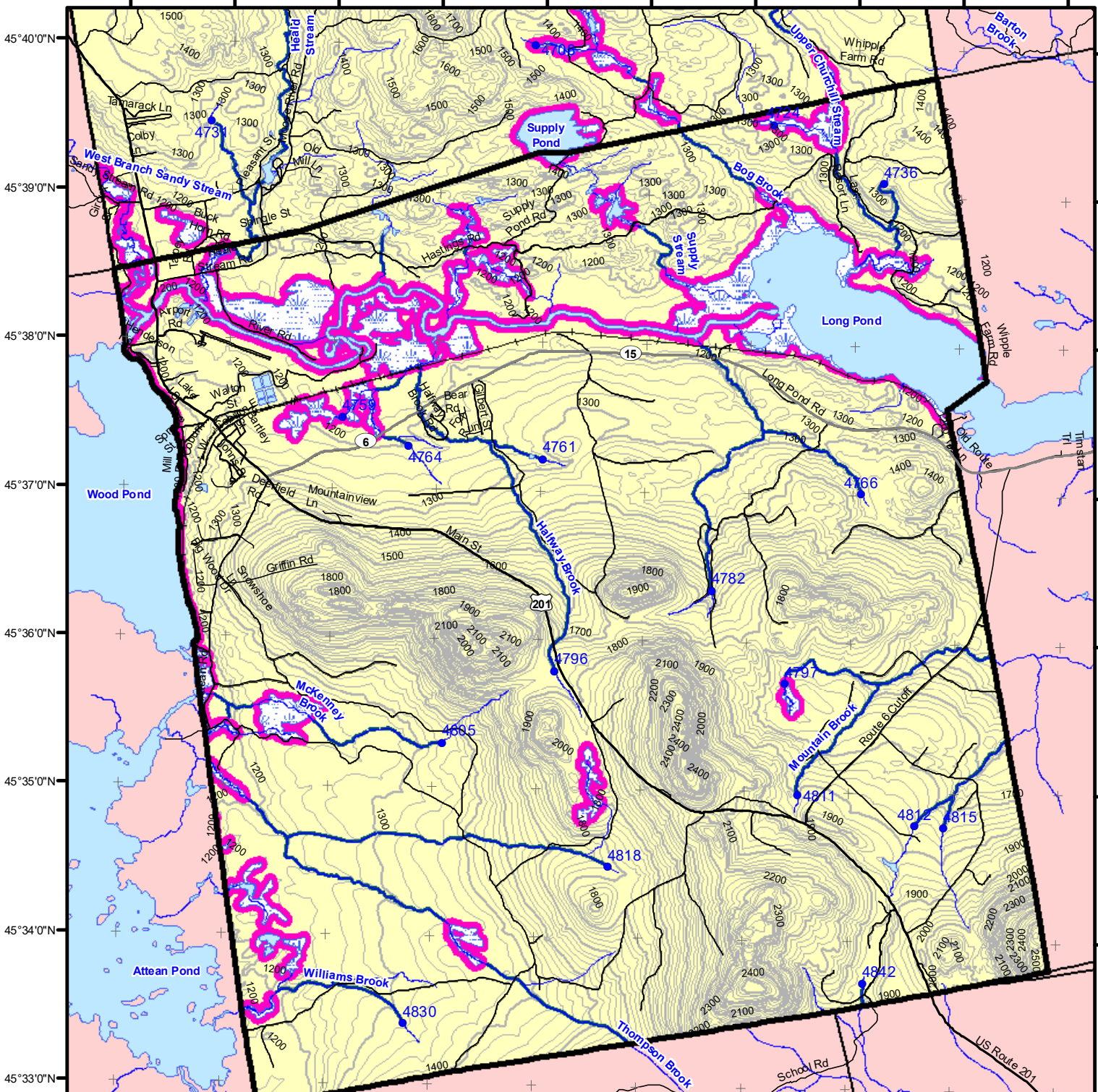


70°16'0"W 70°15'0"W 70°14'0"W 70°13'0"W 70°12'0"W 70°11'0"W 70°10'0"W 70°9'0"W 70°8'0"W 70°7'0"W



Not a legal survey map



Statewide Standards

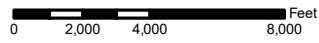
- Buffers**
 - 250 Foot Buffer Zones
 - Great Ponds
 - Non-forested Wetlands greater than 10 acres
 - Rivers below the 25 square mile drainage point
 - Coastal Wetlands
 - Tidal Waters
 - Essential Wildlife Habitat (Least Tern, Roseate Tern, Piping Plover)
 - 75 Foot Buffer Zones - Streams between the 300 acre drainage point and the 25 square mile drainage point
 - Shoreline Integrity - Streams draining less than 300 acres, ponds and wetlands greater than 0.1 acres and less than 10 acres
 - Shoreline Integrity also applies to UNMAPPED streams and wetlands.
- Habitat**
 - Essential Wildlife Habitat (Least Tern, Roseate Tern, Piping Plover)
- Drainage Points**
 - 1234 300 Acre Drainage Point (start of the 75 ft buffer) 1234 - ID Number (location info)
 - 56 25 Square Mile Drainage Point (start of the 250 ft buffer) 56 ID Number (location info)
- Wetlands**
 - Emergent or Marine Wetland
 - Non-forested Wetlands Greater Than 10 acres (Lacustrine, Palustrine)

Forest Operation Notification & Shoreland Area* Map

Jackman

Adoption Date
7/13/2009

December 2021



*See MFS Rule - Chapter 2.1 for additional information.

Department of Agriculture, Conservation and Forestry
Maine Forest Service
Forest Policy & Management

- Roads**
 - Interstate
 - US Highway
 - State Highway
 - 24k Roads
- Contours**
 - 20 ft
 - 100 ft
- Utilities**
 - Electric
 - Pipeline
 - Railroad
 - Airfield
- Hydrology**
 - Pond or Lake
 - River
 - Estuary
- Streams**

LO Last Name _____
LO First Name _____
Prepared By _____
FONS # _____
Date _____

- FON Town
 - Statewide Standards Rules do not apply (Town/MDEP Standards apply)
 - Statewide Standards Rules Apply
 - LUPC - Unorganized or Deorganized Town
 - Outside Maine
- Data Source:
Maine Office of GIS
- G.T.Miller E:\aws\SW S page size december 2021.mxd