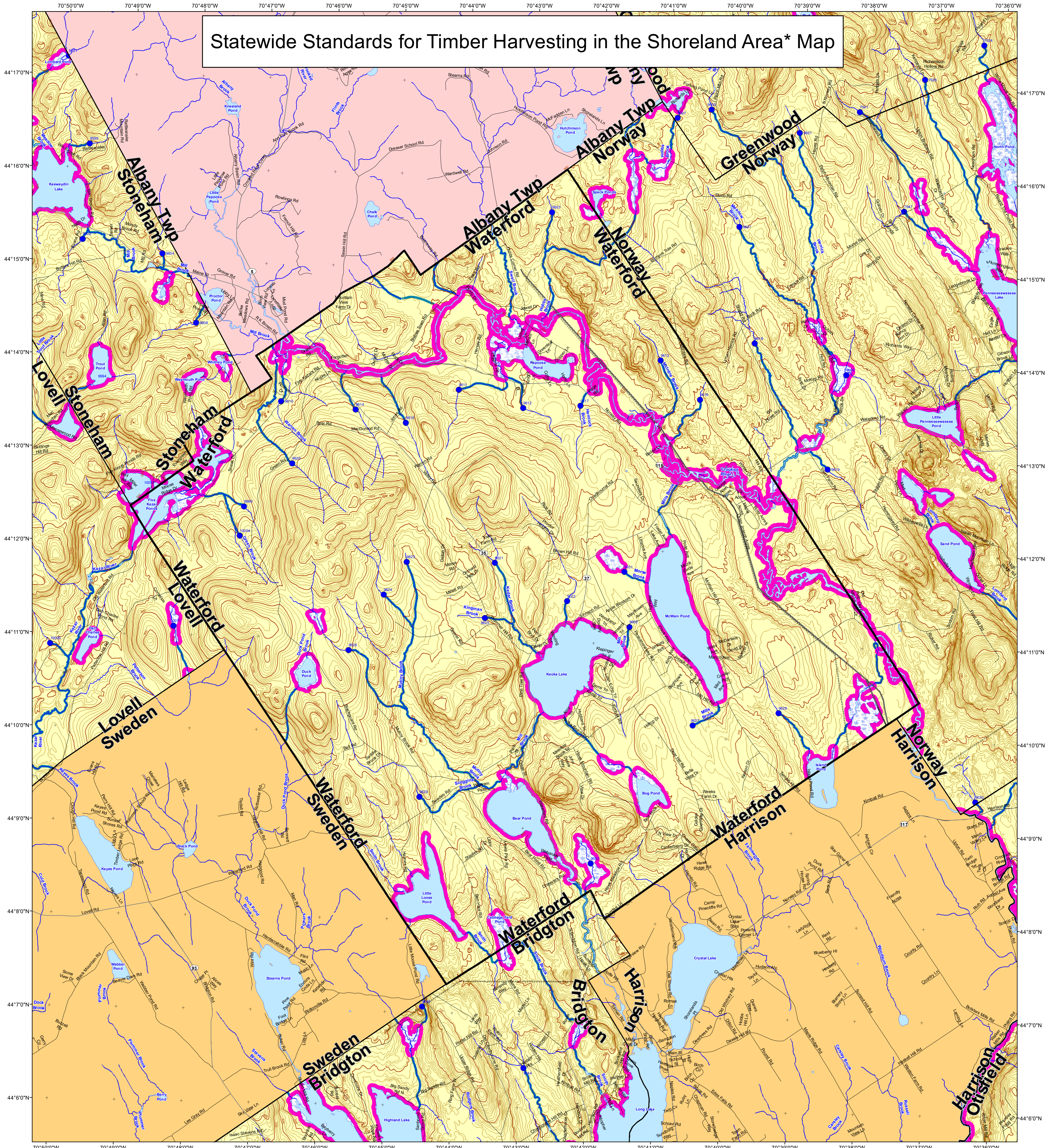


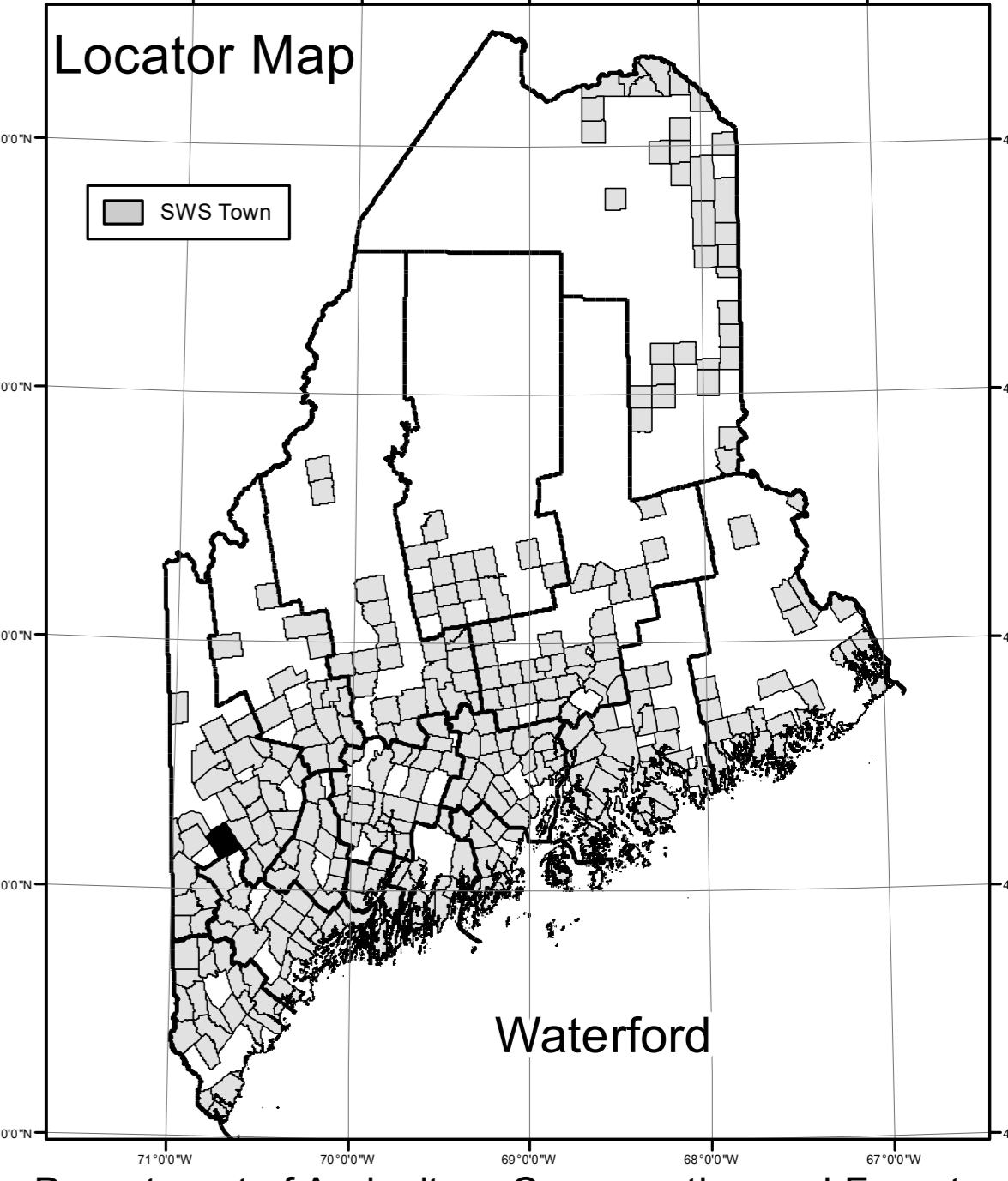
Statewide Standards for Timber Harvesting in the Shoreland Area* Map



This map is **ADVISORY**, for planning purposes only. Actual ground conditions and water body locations determine where and how MFS timber harvesting rules apply. Contact the MFS for additional information/assistance from a MFS Forester.

Forest Operation Notification & Shoreland Area* Map

Adoption Date
12/18/2012



- ### Wetlands
- Non-forested Wetlands Greater Than 10 acres (Lacustrine, Palustrine)
 - Emergent or Marine Wetland

- ### Drainage Points
- 1234 300 Acre Drainage Point (start of the 75 ft buffer)
 - 56 25 Square Mile Drainage Point (start of the 250 ft buffer)

- ### Habitat
- Essential Wildlife Habitat (Least Tern, Roseate Tern, Piping Plover)

- ### Buffers
- SWS Town
 - FON Town (Town/DEP Standards apply (SWS Rules do not apply))
 - Outside Maine
 - LUPC - Unorganized or Deorganized Town

- ### Buffers
- 250 Foot Buffer Zones: Great Ponds, Non-forested Wetlands greater than 10 acres, Rivers below the 25 square mile drainage point, Coastal Wetlands, Tidal Waters, Essential Wildlife Habitat (Least Tern, Roseate Tern, Piping Plover)
 - 75 Foot Buffer Zones - Streams between the 300 acre drainage point and the 25 square mile drainage point
 - Shoreline Integrity - Streams draining less than 300 acres, ponds and Non-forested Wetlands greater than 0.1 acres and less than 10 acres
 - Shoreline Integrity also applies to UNMAPPED streams & wetlands.

Maine Forest Service
For additional information, please contact the MFS at: 1-207-287-2791 or 1-800-367-0223 (in-State)
Email us at: forestinfo@maine.gov
or on the web at: www.maine-forestservice.gov

August 2021

