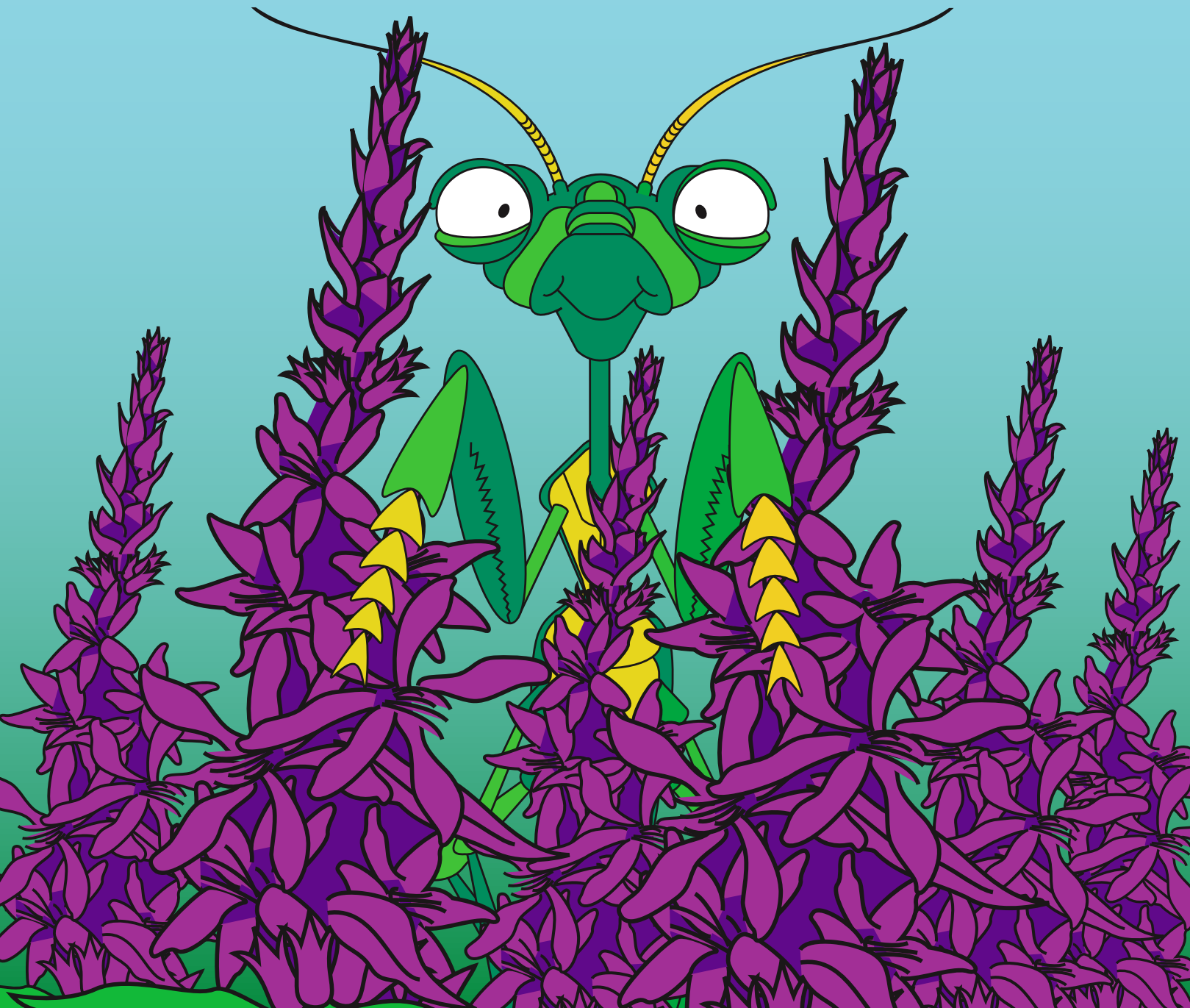


Instructions

1. Color and cut out your game deck.
2. Take turns rolling the dice but play as a team.
3. When an even number is rolled, two purple loosestrife cards from your deck are used to cover two beetle squares.
4. When an odd number is rolled, one beetle card from your deck is used to cover a purple loosestrife square.
5. Play continues until either purple loosestrife or beetles cover the board. The first team to cover all the purple loosestrife wins.



INTEGRATED PEST MANAGEMENT

The PUSHY PLANT Game



The PUSHY PLANT Game

